

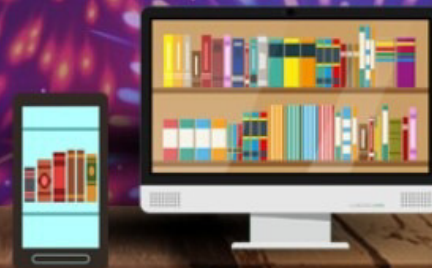
Dear Sir,

Library – Learning Resource Centre Subscribed following Resources for the users.

1. Delnet
2. Shodhganga
3. E-Shodhsundhu
4. Urkund
5. Turnitin
6. IET Digital Library
7. Lexis Nexis
8. Manupatra
9. ProwessIQ
10. Economic Outlook
11. EBSCO – EBooks Collection
12. IEEE – ASPP



# HAPPY NEW YEAR 2022



## Search the DELNET Digital Library Resources

All Fields

---Select Format---

Q Find

[Advanced](#)

You are accessing union catalog of Books, Journals etc

## Full-text Digital Library Resources

### Knowledge Gainer Portal

[Access Full Text E-books, E-journals, E-articles, etc.](#)



### Language Learning Portal

[English](#)  
[Foreign Languages](#)



- Department
- University/Institute Coordinator
- Shodhganga User **▼**
- Upload Thesis
- View Pending Theses
- Change Password

Welcome: kaushik.rao@marwadieducation.edu.in |Logout|

## University/Institute Coordinator

Search University:

#	Name	University	Address	City/State	Phone	Edit
1	Dr. Kaushik Rao	Marwadi University	Librarian Library Learning Resource Centre Marwadi University Rajkot Morbi Highway	Rajkot Gujarat	9099939585	<a href="#">Edit</a>

Page 1 of 1



# Online e-Resource Requisition System

Online e-Resource Requisition System >> Institute Profile

Welcome Faculty of Engineering, Marwadi Education Foundation Group of Institutions, Rajkot

Logged in as library@marwadieducation.edu.in | Change Password | Logout

Institute Profile

Survey Details

Negotiated Status

Subscribed E-Resources

## Institute Profile

Faculty of Engineering, Marwadi Education Foundation Group of Institutions, Rajkot

At: Gauridad, Rajkot-Morbi Highway, Rajkot, Rajkot, Gujarat - 0

Librarian / Professor I/c Library Contacts:

Mr. Kaushik Rao

Librarian

Phone: 0281-7123456 Ext. 1011

Email: library@marwadieducation.edu.in

Technical Contacts:

User Details:

Source: aish (2019-20)

No. of FTE / Users: 1961 [153 (faculty) + 1808 (students)]

Consortia Name:

+ Users ▾

Marwadi University ▾

< 1 - 2 >

Marwadi University

Search

KR

Name	Email	Role	Created On ▾
Library_MEFGi	library@marwadieducation.edu.in	Receiver	09/09/2019
Kaushik Rao	kaushik.rao@marwadieducation.edu.in	Administrator	08/17/2019

Information

Select an item to get more information.



Accounts Instructors

NOW VIEWING: HOME

### About this page

This is your administrator homepage. Your accounts are listed below. To display a list of instructors joined to an account, click the button in the instructors column.

**Marwadi University**

Account ID	Account Name	Status	Instructors	New Account	Stats	Edit	Anonymous Marking	Integrations	Delete
115887	Marwadi University	Active					--		

All content

[Search](#)[Advanced search](#)[Journals & magazines](#)[Conferences](#)[eBooks](#)[Reference](#)[Subjects](#)[Collections](#)[Home](#) > [eBooks](#)

## eBooks

spec Archive

The Abstracts collection from 1898 to 1968 in digital format.

NEW EDITION

Principles of M  
Volume 1, Basic Pri

Save 10%

POMR



MEFGI

Your access is provided by:

Marwadi Education  
Foundation's Group of  
InstitutionsRegister to create your  
user account, or [sign in](#)  
if you have an existing  
account[Login](#) ▶[Forgotten password?](#) ▶[Login via your institution](#)

Share



## Tools

[Create book email alert](#)

## Key

- Free content
- Open access content
- Subscribed content
- Trial content

**Subscribe**  
to access a wealth  
of digital engineering  
and technology

[Browse by title](#)[Browse by author](#)[Browse by topic](#)

17 items found

Sort by: [Newest titles first](#) | [Title A - Z](#)Items per page [20](#) | [50](#) | [100](#)

## Filter by subject:

[General electrical engineering topics \[8\]](#)[General and management topics \[4\]](#)[Wind power plants \[3\]](#)[Product packaging \[2\]](#)[Power system control \[2\]](#)[Solar power stations and photovoltaic power systems \[2\]](#)[Synchronous machines \[2\]](#)[Power converters and power supplies to apparatus \[2\]](#)[Drives \[2\]](#)[Control system analysis and synthesis methods \[2\]](#)[See more](#)[Robust and Adaptive Model Predictive Control of Non-linear Systems](#)

Author(s): Martin Guay ; Veronica Adetola ; Darryl DeHaan

Publication Year: 2015

[Show details](#) ▶[Reliability of Power Electronic Converter Systems](#)

Editors: Henry Shu-hung Chung; Huai Wang; Frede Blaabjerg; Michael Pecht

Publication Year: 2015

[Show details](#) ▶[Digital Techniques for Wideband Receivers](#)

Author(s): James Tsui and Chi-Hao Cheng

Publication Year: 2015

# Lexis Advance® India

- MARWADI UNIVERSITY
- None-
- Set/Add Client ID

IN  Search: Everything >

### History

Searches	Documents	Shepard's®
civil proceeding Legal Search		

[View all history](#) [Research Map](#)

### Support

Access Lexis Advance® India Research Help  
[View help topics or search the help](#) | [Browse](#)

Tutorials  
[All Tutorials](#)

Contact Customer Support  
Phone: + 91 124 4774477 or 1800-102-8177 (Airtel)

### Quick Find

Cases	Legislation	Analytical Materials	Defined Terms
-------	-------------	----------------------	---------------

Case Citation

Case Name

Advanced Search: [Cases](#)

Start in:  International Snapshot View  
 IN Cases

[Search](#)

### Latest Updates

### Publications

- Universal Bare Acts
- Madras Law Journal - Criminal (Case Law)
- Madras Law Journal - Civil (Case Law)
- Labour Law Journal (Case Law)
- Avtar Singh: Introduction to Labour and Industrial Law
- Mulla: Principles of Mahomedan Law, Updated 20th Edition
- Kusum & Poonam Pradhan Saxena - Family Law
- Halsbury's Laws of India (Civil Procedure) 2nd Edn
- Mulla : The Code of Civil Procedure, 18th Edition
- Doabia & Doabia: Law Of Elections and Election Petitions, 5e 2016
- Justice B P Banerjee : Writ Remedies- Remediabale Rights under public Law
- M P Jain: Indian Constitutional Law , 7th Edition
- G.P. Singh: Principles of Statutory Interpretation
- E M Rao: Industrial Jurisprudence - A Critical Commentary, 2e 2015





**SIGN OFF**

Show/Hide TOC

- Manupatra
  - Supreme Court
  - High Courts and Other Cou
  - Tribunals and Commissions
  - International Database
  - Business Policy / Industry I
  - Corporate Law and Taxatio
  - Notifications and Circulars
  - Bare Acts (Statutes) / Rules
  - Bills, Drafts, Ordinances, R
  - Forms
  - Miscellaneous
  - e-Books
  - Academic e-Books
  - Articles
  - Legal Taxonomy

Please note your Password expires in 0 day(s).

Welcome **Marwadi Education Foundations Group of Institutions**

Manupatra

Feedback

Today **01 Jul, 2022**

Your last login was on: **01 Jul 2022: 12:02 PM**

### MY PREFERENCES

- Sort Results by
- Dictionary Link
- Synonym Preference
- Filters / Navigator

### PROFILE

- Manage Search
- Communication from Manupatra
- Account Details

### RESOURCE

- Dictionary
- Maxims
- Court Calendar

### UPDATES

- Manu Clip
- Desktop Alert Plus New

### COMPARE PROVISIONS

- Constitution of different countries
- 2 Acts : [Central - Central] : [State: Central] : [State: State]
- Law as on present date and date of inception

### VALUE ADDS

- GST Rate Finder
- GST Important Dates
- RERA Ready Reckoner
- COVID-19 Guidelines

Query Builder | Output View | Report Viewer/Chart Plotter | Work Sheet | Commands History and Planner

Trigger Name:  Search

History : < Select Company by Name >

Query Tab Panel

Clear     Status Bar    Select a file type :  
 Copy     Query Pane    User Set  
 Paste    Upload    Download  
 Upload / Download File

Currency : Rs. Million    Annualise OFF  
 Exchange : BSE    Planner OFF  
 Observation :     Freeze Reports

Refresh

To seek clarification on content and operations, visit <https://prowessiq.cmie.com>

Queued: 0, Processing: 0    **NEW OUTPUTS**

Companies and Sets

- Select Company by Name
- Select Companies in Pre-defined Sets
- Execute CMIE / User Batches

---

Company Address and Identity Indicators

Ownership Structure and Governance Indicators

Financial Statements

Stock Prices and Capital Changes

Business Segments and Products

CapEx and M&A

Miscellaneous

Select Companies by: Company Name

Search in Prowess Database     Select Company Name from File

Start Typing Company Name for Auto Search:

TATA

Enter Pattern for Search within Company Name:

Search

Results of Company Name search: 188

Company Name	Company Name
TATA ADVANCED MATERIALS LTD. (MERGED)	TATA ADVANCED MATERIALS LTD. (MERGED)
TATA ADVANCED SYSTEMS LTD.	TATA ADVANCED SYSTEMS LTD.
TATA AEROSTRUCTURES LTD.	TATA LOCKHEED MARTIN AEROSTRUC
TATA AIRLINES PVT. LTD.	CONNEQT BUSINESS SOLUTIONS LTD.
TATA ASSET MANAGEMENT CO. LTD.	TATA ASSET MGMT. PVT. LTD.
TATA ASSET MGMT. LTD.	TATA ASSET MGMT. PVT. LTD.
TATA ASSET MGMT. PVT. LTD.	TATA ASSET MGMT. PVT. LTD.
TATA AUTO PLASTIC SYSTEMS LTD.	TATA AUTO PLASTIC SYSTEMS LTD.
TATA AUTOCOMP GY BATTERIES LTD.	TATA AUTOCOMP GY BATTERIES PVT. L
TATA AUTOCOMP GY BATTERIES PVT. LTD.	TATA AUTOCOMP GY BATTERIES PVT. L
TATA AUTOCOMP HENDRICKSON SUSPENSIONS PVT. LTD.	TATA AUTOCOMP HENDRICKSON SUSP
TATA AUTOCOMP KATCON EXHAUST SYSTEMS PVT. LTD.	TATA AUTOCOMP KATCON EXHAUST SY

Reset

Selected Company Names: 129

Selected Company Names	Prowess Company Code
TATA ADVANCED MATERIALS LTD. (MERGED)	248068
TATA ADVANCED SYSTEMS LTD.	379339
TATA LOCKHEED MARTIN AEROSTRUCTURES LTD.	434971
CONNEQT BUSINESS SOLUTIONS LTD.	347915
TATA AUTOCOMP GY BATTERIES PVT. LTD.	370068
TATA AUTOCOMP HENDRICKSON SUSPENSIONS PVT. LTD.	386678
TATA AUTOCOMP KATCON EXHAUST SYSTEMS PVT. LTD.	557079
TRIMBLE MOBILITY SOLUTIONS INDIA PVT. LTD.	391800
TATA AUTOCOMP SYSTEMS LTD.	248074
TATA B P LUBRICANTS INDIA LTD. (MERGED)	248076
TATA POWER SOLAR SYSTEMS LTD.	248077
TATA BLUESCOPE STEEL PVT. LTD.	371167
TATA INFOTECH LTD. (MERGED)	248131
TATA CAPITAL FINANCIAL SERVICES LTD.	414229
T C FOREX SERVICES LTD. (MERGED)	413833
TATA CAPITAL HOUSING FINANCE LTD.	392078
TATA CAPITAL LTD.	181445
TATA CAPITAL MARKETS LTD. (MERGED)	380134
T C L CERAMICS LTD.	248082
TATA CLEANTECH CAPITAL LTD.	438192
TATA COFFEE LTD.	248085
TATA COMMUNICATIONS PAYMENT SOLUTIONS LTD.	388107

Select Domain

All Companies     Companies in current OSC

Select Output Destination

<input type="checkbox"/> Row	<input checked="" type="radio"/> OSC
<input type="checkbox"/> Cos	

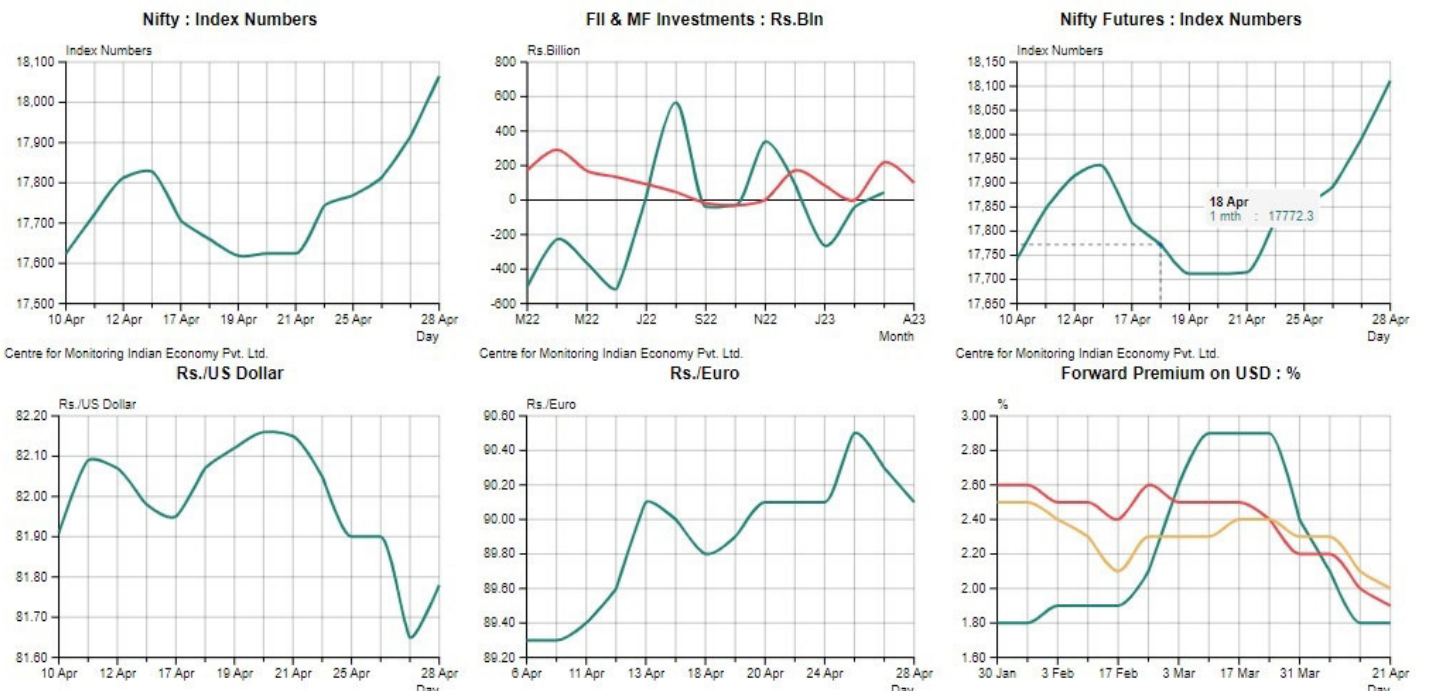
Save in Userset as :

Execute



# Economic Outlook

[Markets \(Charts | Tabulations\)](#) | 
 [Economy \(Charts | Tabulations\)](#)





Searching: **eBook Academic Collection (EBSCOhost)** | [Choose Databases](#)

 [?](#)

[Search Options](#) | [Basic Search](#) | [Advanced Search](#) | [Search History](#)



[EBSCO Connect](#) | [Privacy Policy](#) | [A/B Testing](#) | [Terms of Use](#) | [Copyright](#) | [Cookie Policy](#)

Activate Windows  
Go to Settings to activate Windows.

Access provided by:  
Marwadi Education  
Foundation's Group of  
Institutions

Sign Out

# Advancing Technology for Humanity

SEARCH **5,661,277** ITEMS

All  🔍

ADVANCED SEARCH ▶


TOP SEARCHES +

 **IEEE DiscoveryPoint for Communications**


The All-in-One Platform for Practicing Engineers

 **Request a Demo**

## Featured Authors

 **Ali Kashif Bashir**

 **Athina P. Petropulu**

 **Dacheng Tao**

Activate Windows  
Go to Settings to activate Windows.

Feedback